



St Paul's C of E Primary School

Half Termly Attendance Letter



Why is Good Attendance Important ?

Interacting with teachers and classmates in school is the most effective way for students to learn and reach their full potential. Time spent in school also plays a key role in ensuring children's safety while providing them with access to extracurricular activities and support services. This underscores the importance of regular school attendance and the Government's commitment to tackling the issues that cause some children to miss school without valid reasons.

Students with higher attainment at KS2 generally had lower absence rates compared to those with lower attainment.

Overall, as the percentage of missed sessions during KS2 increases, attainment levels at the end of the stage tend to decrease. Among pupils with no absences during KS2, 83.9% reached the expected standard, compared to 40.2% of pupils who were persistently absent.

Source: *The link between absence and attainment at KS2 and KS4, Academic year 2018/19 – Explore education statistics – GOV.UK (explore-education-statistics.service.gov.uk) Published 202*



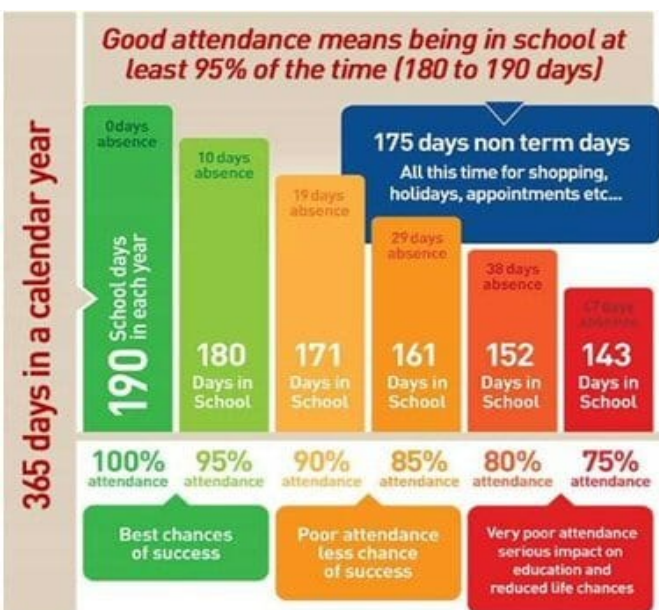
Attend Today, Achieve Tomorrow



Your commitment to regular attendance contributes greatly to the positive and thriving school environment

Congratulations to all classes for a wonderful start back currently our **School Attendance is 97.5%**

Let's continue this fantastic start and strive for excellence in attendance.



DID YOU KNOW? A two week holiday in term time means that the highest attendance you can achieve is **94.7%**

DID YOU KNOW? If you are 15 minutes late each day you will have missed a full 2 weeks of school in one year?

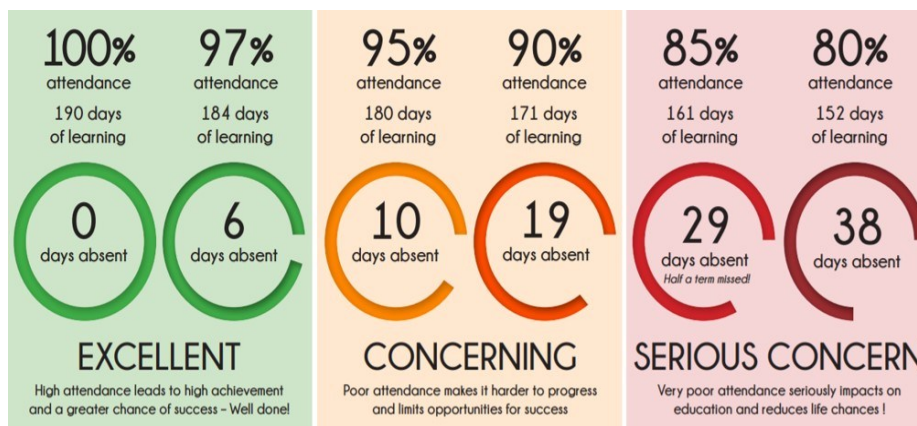
If your child is absent from school you must:

- Contact the office before 9am on the first day of absence (01432) 273784
- Give a clear reason for your child's absence along with name and class.



Steps of intervention when attendance drops below 95%

Working closely with our families is vital for us to understand the context and reasons for absences. The steps of intervention that have been outlined below are implemented when a child has repeat absences. If you are at all concerned about your child's attendance, please do make an appointment with Mrs Millington-Jones our attendance lead.



Step 1 Attendance drops below 95%:

Attendance lead will give the family a call to chat about the reasons for the 10 days absence. In this phone call, the Attendance lead will offer support and advice, reminding families of why attendance in school is so important.

Step 2 Attendance continues to drop between 93% and 90%:

When a child's attendance has dipped between 93% and 90% attendance (max of 19 days absent) parents and carers will be contacted and invited to a meeting with Attendance lead to discuss absences. Absence periods will be fully discussed with support plans offered to those families who are struggling to get children in school on a daily basis.

Step 3 Attendance continues to drop below 90%:

If attendance of a child continues to drop below 90%, our Education Welfare Officer and or Attendance lead will meet with families to offer further support in an individualised action plan. This action plan aims to give parents and carers smaller more manageable targets to help support children with their attendance in school.

Step 4 Possible Safeguarding Concern:

If attendance of the child doesn't improve following all support plans and interventions in place, we will discuss this potential safeguarding matter further with the Education Welfare Officer and the Local Authority for further advice.